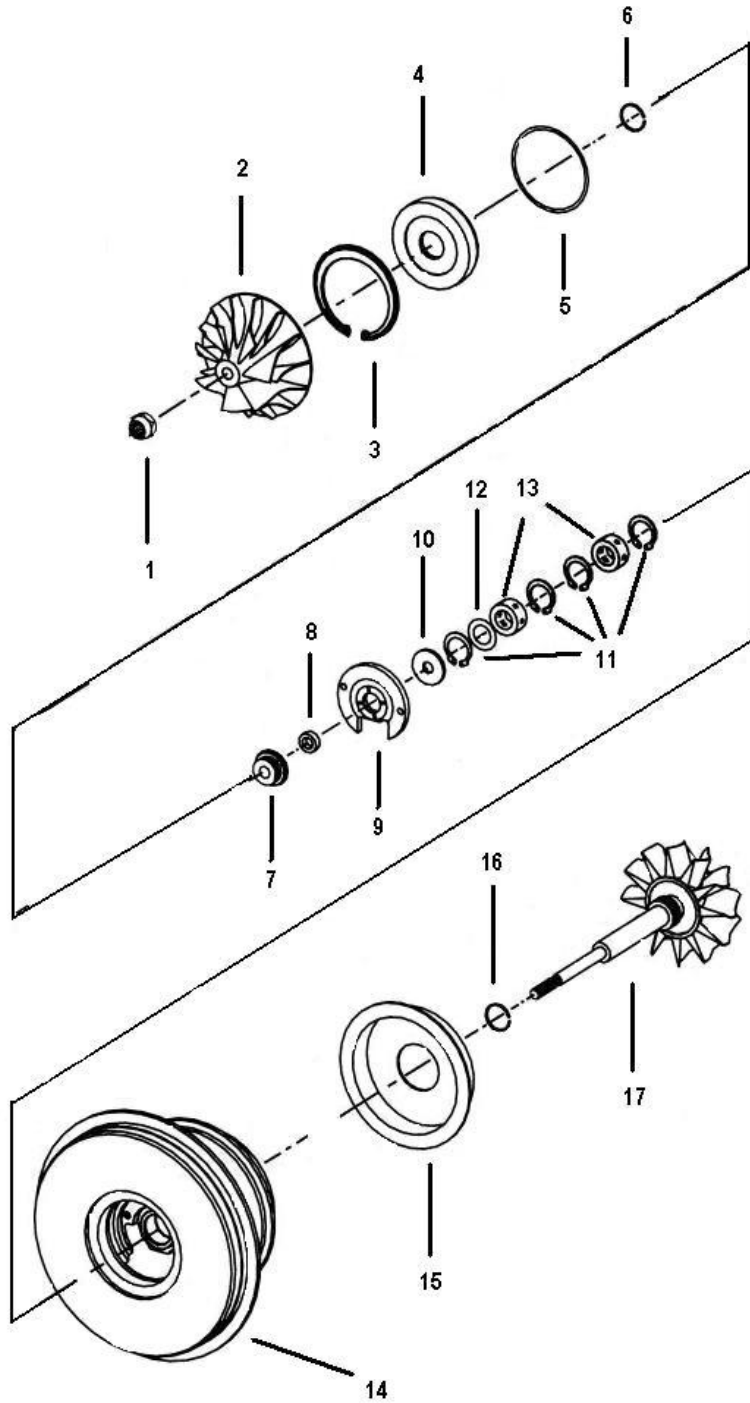


# Borg Warner (Schwitzer) S1AG S1B / S1BG Type Turbos

Common Repair Parts  
Oversize Repair Parts

# S1B Type

## Component Parts Common



This illustration is a guide and does not necessarily show all parts accurately

# S1B Type

## Repair Parts & Service Kits

All parts are available for purchase as individual components or in the following popular Repair Kits

Key	Part Description	Qty Per Turbo	MELETT Part Number	OE Part Number	Repair Kit <b>1252-201-750</b>
13	Journal Bearing (Std/Std)	2	<b>1252-201-100</b>	312758	2
11	Retaining Ring (J/Brg)	4	<b>1252-201-140</b>	312760	4
3	Retaining Ring Bevelled	1	<b>N/A</b>	311860	
5	'O' Ring (Seal Plate)	1	<b>1252-201-150</b>	311861	1
16	Piston Ring (Turb)	1	<b>1252-201-160</b>	313783	1
6	Piston Ring (Comp)	1	<b>1252-201-170</b>	311857	1
-	'O' Ring (Comp Cover)	1	<b>1252-201-155</b>	312553	1
9	Thrust Bearing	1	<b>1252-201-320</b>	169947	1
-	Bolt T/Hsg (Stainless Steel)	4	<b>1252-201-600</b>	315599	4
-	Bolts C/Cvr (Patched)	4	<b>1100-045-610</b>	312345	4
1	Shaft Nut (M6 LHT)	1	<b>1100-025-350</b>	316605	1
1	Shaft Nut (M5 x 0.8 LHT)	1	<b>1102-015-351</b>	313590	1
					Replace 318374

## Oversize Repair Parts Available

Journal Bearings		
Original Schwitzer Part Number (Std/Std): 312758		
Oversize's Available	Part Number	
OD +.005"	ID -.005"	<b>1252-201-110</b>
OD +.005"	ID Std	<b>1252-201-114</b>
OD Std	ID -.005"	<b>1252-201-117</b>
OD +.010"	ID -.010"	<b>1252-201-120</b>
OD +.010"	ID Std	<b>1252-201-124</b>
OD STD	ID -.010"	<b>1252-201-127</b>

Piston Rings	
Original Schwitzer Part Number (Turb End): 313783	
Original Schwitzer Part Number (Comp End): 311857	
Oversize's Available	Part Number
Only standard sizes currently available. Please contact Melett Sales with requirements	